



Granuphilin Polyclonal Antibody

Catalog No	YP-Ab-00701
Isotype	IgG
Reactivity	Human;Mouse;Rat
Applications	WB;ELISA
Gene Name	SYTL4
Protein Name	Synaptotagmin-like protein 4
Immunogen	The antiserum was produced against synthesized peptide derived from human SYTL4. AA range:381-430
Specificity	Granuphilin Polyclonal Antibody detects endogenous levels of Granuphilin protein.
Formulation	Liquid in PBS containing 50% glycerol, 0.5% BSA and 0.02% sodium azide.
Source	Polyclonal, Rabbit,IgG
Purification	The antibody was affinity-purified from rabbit antiserum by affinity-chromatography using epitope-specific immunogen.
Dilution	Western Blot: 1/500 - 1/2000. ELISA: 1/40000. Not yet tested in other applications.
Concentration	1 mg/ml
Purity	≥90%
Storage Stability	-20°C/1 year
Synonyms	SYTL4; Synaptotagmin-like protein 4; Exophilin-2; Granuphilin
Observed Band	76kD
Cell Pathway	Membrane ; Peripheral membrane protein . Cell membrane ; Peripheral membrane protein . Cytoplasmic vesicle, secretory vesicle membrane ; Peripheral membrane protein . Detected close to the plasma membrane and on secretory granules. In pancreas, interacts with insulin-containing vesicles (By similarity). .
Tissue Specificity	Adrenal gland,Endometrium,Epithelium,Platelet,Spinal cord,Testis,Uterus,
Function	function:Modulates exocytosis of dense-core granules and secretion of hormones in the pancreas and the pituitary. Interacts with vesicles containing negatively charged phospholipids in a Ca(2+)-independent manner.,similarity:Contains 1 FYVE-type zinc finger.,similarity:Contains 1 RabBD (Rab-binding) domain.,similarity:Contains 2 C2 domains.,subcellular location:Detected close to the plasma membrane and on secretory granules. In pancreas, interacts with insulin-containing vesicles.,subunit:Part of a ternary complex containing STX1A and RAB27A. Can bind both dominant negative and dominant active mutants of RAB27A. Binds STXBP1, RAB3A, RAB8A and RAB27B.,
Background	This gene encodes a member of the synaptotagmin like protein family. Members of this family are characterized by an N-terminal Rab27 binding domain and C-terminal tandem C2 domains. The encoded protein binds specific small Rab



GTPases and is involved in intracellular membrane trafficking. This protein binds Rab27 and may be involved in inhibiting dense core vesicle exocytosis. Alternate splicing results in multiple transcript variants that encode the same protein. [provided by RefSeq, Mar 2010],

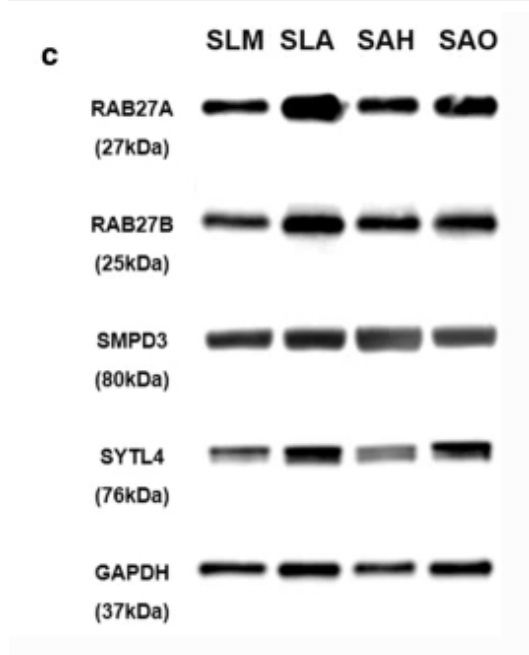
matters needing attention

Avoid repeated freezing and thawing!

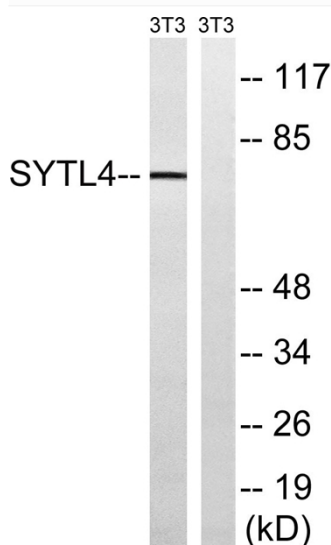
Usage suggestions

This product can be used in immunological reaction related experiments. For more information, please consult technical personnel.

Products Images



Zhang, Z., Xu, R., Yang, Y. et al. Micro/nano-textured hierarchical titanium topography promotes exosome biogenesis and secretion to improve osseointegration. J Nanobiotechnol 19, 78 (2021).



Western blot analysis of lysates from NIH/3T3 cells, using SYTL4 Antibody. The lane on the right is blocked with the synthesized peptide.